



## Cutting Edge AI

Innovative technology built specially for emergency situations



## Scalable

Easy replication for different customers and geographics



## Simple

Quick integration and intuitive use



## Flexible

Modular system in which each part can operate independently

Let's keep in touch



info@relyon.ai



Relyon.ai



www.relyon.ai

## RELYON'S AI-BASED PLATFORM FOR MANAGING PERSONAL SAFETY AND PUBLIC SAFETY

Reylon is a technological company, develops voice algorithms provides innovative technological safety solutions that enhance the security for all and allow to **get more control, quicker response** and **effective communication during emergency situations** or unsafe environments.

Relyon's AI platform revolutionizes personal safety and public security by embedding cutting-edge voice algorithms within end devices, Creating a new standard for first responders.

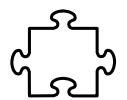
## Key benefits



**Data driven** for real insights and better safety decisions

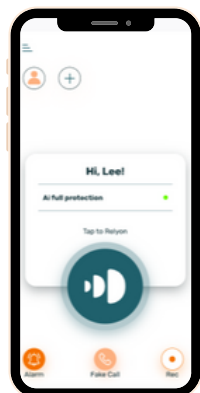


**Always on** - 24/7 availability for your needs



**Tailor Made** - Special requirements and white label on demand

## Our Products



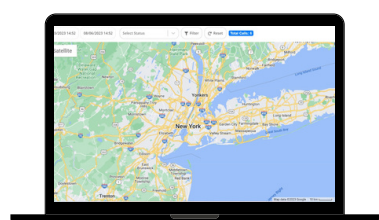
### Relyon's personal safety app

Relyon's personal safety app leverages advanced algorithms to create a groundbreaking solution that enhances individual security and facilitates emergency communication. With features like **hands-free voice activation, real-time video calls**, and the ability to **track employees, family**, and friends, our app redefines personal safety, providing unmatched connectivity and rapid response capabilities.



### Acoustic Anomaly Detection

The sensor, designed for public safety, utilizes advanced sound algorithms to instantly **detect and classify** a range of acoustic events, including shootings, brawls, car accidents, thefts, and more. It ensures **real-time alerts** and precise **geo-location**, while its rugged, **waterproof, and transportable** design guarantees reliability in diverse scenarios.



### Relyon's Control System

Our all-encompassing system that empowers you with full-scale **monitoring and control**. Effortlessly **obtain event locations on a map**, establish **custom polygons**, receive **departure alerts from designated zones**, and utilize our efficient **mass messaging** system. Additionally, gain access to comprehensive **data and reports**, facilitating informed decision-making.