



RIMONI
Because We Always Deliver

**HIGH
PRECISION
MANUFACTURING**

OUR STORY

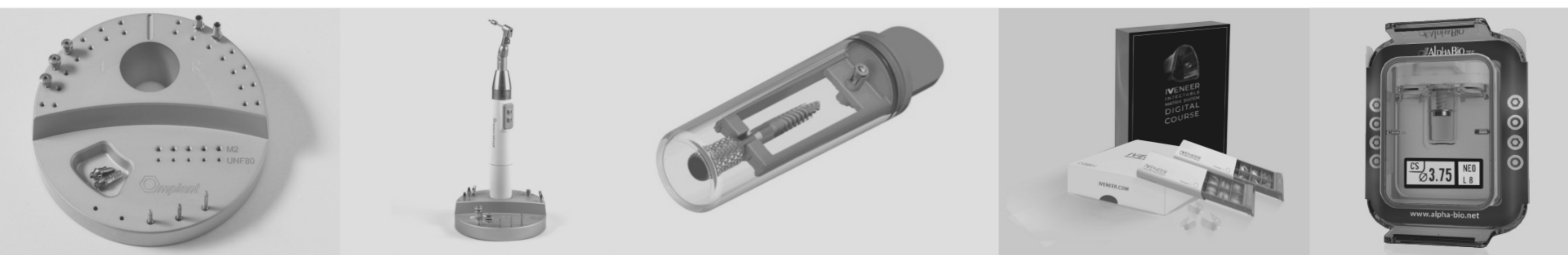
Rimoni is committed to delivering on its promise to "Always Deliver" by transforming customer ideas into reality. Combining precision craftsmanship with innovative engineering and design, Rimoni provides a comprehensive service from design to mass production.

ONE-STOP-SHOP MAKES THE COMPLEX SIMPLE

At Rimoni, we offer comprehensive solutions with over 70 years of excellence and state-of-the-art manufacturing, providing customers with everything they need through a single point of contact.

Rimoni offers comprehensive solutions for dental products, encompassing design, development, assembly, mold construction, and injection molding. With extensive expertise and a commitment to precision, we collaborate with leading companies driving innovation in dental care, medical technology, and patient well-being.

WORKING WITH THE LEADING BRANDS AND COMPANIES AROUND THE GLOBE



implant Driver

AlphaBio
TEC
Simplantology

IVENEER
INJECTABLE MATRIX SYSTEM



Industrial
Design



Engineering &
Development



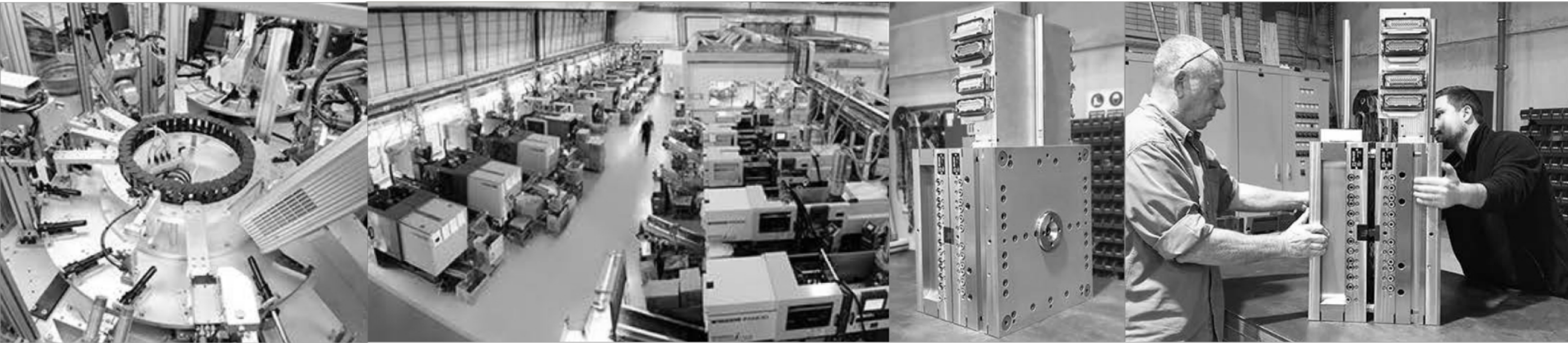
Molds
Manufacturing



Injection
Molding



Assembly



1954

1979

1994

1999

2017

2020

The Beginning

The first injection
molding machine

Tel Aviv Stock
exchange

MPE
Automotive industry

Rimoni Modi'im
new factory

FIMI fund become
a partner