

hlth.2026

healthcare innovation event



hlth.
EUROPE

June 15-18, 2026

RAI Convention Centre, Amsterdam

Booth No. E40



Content

Intro - Why Israel?	3
The Israel Export Institute	5
The Foreign Trade Administration	6
Index by Company	7
Index by Category	9
Index by Therapeutic Areas	10
deliverz.ai	11
EFA Technologies	12
iMDsoft	13
Kemtai Ltd.	14
Movement Wellness	15
Nanose Medical	16
Neteera	17
PATTERNOX	18
Pulsenmore Home Ultrasound	19
WizeCare Technologies	20



Why Israel?

DIVERSITY is the backbone of Israel's Health Eco-System

- Diverse Companies • Broad Medical Applications
- Cross-disciplinary Technologies

Innovation at Scale

By 2025, Israel boasts **1,800+ active life science companies**, growing steadily from just 200 in the 1990s.

- **40+ new startups/year**
- **40% already generating revenue**

Within a relatively short period of time, an impressive 40% of these companies are already generating revenue. Israel's entrepreneurial ecosystem creates opportunities for start-ups to become advanced, commercially viable and promising businesses.

A Thriving Ecosystem

Israel's unique blend of **entrepreneurship & deep tech** transforms ideas into **global breakthroughs, incorporating the best of Artificial Intelligence (AI)**.

The Largest Sectors are Medical Devices and Digital Health (over 67% of companies). In the medical device arena, Israeli scientists and engineers have integrated advanced technologies in electronics, communications and electro-optics to develop world-class innovations.

\$2B+ invested in Medical Devices & Digital Health in 2023 alone.

600+ exporters supplying innovations across:

- Cardiovascular & Neurology • Orthopedics & Sports Medicine • Women's Health & Emergency Care • Early Diagnostics & Smart Surgery • Digital Imaging & Medical Lasers.



Digital Health: Beyond the Clinic

Israel pioneers the **future of healthcare**, driven by:

Telemedicine

Big Data & AI

Wearables

Remote Monitoring

Health IT & EMRs

Internet of Medical Things

For **millions without easy access to care**, Israeli innovation delivers healthcare anytime, anywhere.

The digital era opens tremendous opportunities to deliver healthcare services to patients at the comfort of their homes or wherever they are, through any web or mobile device, without requiring a presence of healthcare provider in the loop, enabling **Remote Monitoring**.

Israeli Digital Health industry has its roots in a long history of using innovative communication technologies to **improve healthcare delivery**. With more than 25 years of expertise in implementing health IT, electronic medical records and Big Data Analytics; today, the Israeli government continues to invest heavily in health IT, positioning Israeli expertise in high international demand. **High-Tech Meets Healthcare** From **design to deployment**, Israeli medical solutions integrate:

Advanced
manufacturing

Smart
materials

Precision
systems

Personalized
care

Patient-centered innovation that improves outcomes &
optimizes medical staff performance



ISRAEL EXPORT INSTITUTE

Israel Inspired by Innovation at HLTH 2026

The Israel Export Institute, supported by member firms, private sector bodies and the government of Israel, advances business relationships between Israeli exporters and overseas businesses and organizations. By providing a wide range of export-oriented services to Israeli companies and complementary services to the international business community, the Institute helps build successful joint ventures, strategic alliances and trade partnerships. It has a worldwide business partnerships at all levels and proven ability to identify and match suitable potential partners, organize one-on-one business meetings, and is a focal point for contacts with the government as well as with industry.

The IEI's Health Tech Sector is the leader in business matching between more than 1,800 Israeli companies in the life science industry and worldwide business partners and investments.

Israel's life sciences and Health Tech industry includes companies targeting all the fields of medicine and offers a variety of innovative medical solutions and technologies that answer today's healthcare challenges.

Discover [Israel's Medical Device & Digital Health Industry](#) with IEI.

Karin Mor | Director of Health | karinkm@export.gov.il

Adi Salem | Business Development Coordinator | adis@export.gov.il



Ministry of Economy and Industry
Foreign Trade Administration

The Foreign Trade Administration at HLTH 2026

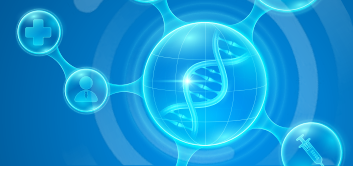
The Foreign Trade Administration (FTA) at Israel's Ministry of Economy and Industry is responsible for shaping and executing the international trade policy of the State of Israel. Our mission includes advancing Israeli exports, negotiating and maintaining trade agreements, attracting foreign investment, and fostering strategic partnerships with global companies.

The FTA operates a global network of 55 offices in business capitals across major international markets. These Missions serve as Israel's front line in promoting economic diplomacy, supporting Israeli industry abroad, and creating business opportunities across sectors.

At HLTH 2026, our Economic and Trade Missions from around the world, will join forces to spotlight Israel's world-renowned and innovative Healthcare Ecosystem, from health organizations to leading startups. Building on the success of past years, we are proud to connect leading Israeli innovators with the global healthcare ecosystem, opening doors to impactful partnerships and transformative technologies.

Elizabeth Solovyov | Pavillion Director | Elizabeth.Solovyov@israeltrade.gov.il

Shaked Haran | Coordinator | Shaked.Haran@economy.gov.il







Index by Company

Company	Web	Category	Therapeutic Area	Page
	www.deliverz.ai	<ul style="list-style-type: none"> • Artificial Intelligence • Hospital Operational Efficiency • Robotics 	<ul style="list-style-type: none"> • General Health • Oncology • Primary Care 	11
	www.efa-technologies.com	<ul style="list-style-type: none"> • Medical Equipment • Mobile Healthcare • Telemedicine Solutions 	<ul style="list-style-type: none"> • Hematology 	12
	www.imd-soft.com	<ul style="list-style-type: none"> • Clinical Document Management • Electronic Medical Records • Nursing Applications 	<ul style="list-style-type: none"> • Emergency Medicine • General Surgery • Intensive Care 	13
	www.kemtai.com	<ul style="list-style-type: none"> • Artificial Intelligence • Proactive wellness / Lifestyle / Patient Engagement • Telemedicine Solutions 	<ul style="list-style-type: none"> • Obesity • Orthopedic • Rehabilitation 	14
	www.movement-group.com	<ul style="list-style-type: none"> • Artificial Intelligence • Personal Health Assistant • Proactive wellness / Lifestyle / Patient Engagement 	<ul style="list-style-type: none"> • General Health • Metabolic Diseases • Neurology and Degenerative Disease 	15
	www.nanosemed.com	<ul style="list-style-type: none"> • Diagnostic • Disease Management • Point of Care Diagnostics 	<ul style="list-style-type: none"> • Metabolic Diseases • Oncology • Primary Care 	16



Index by Company

Company	Web	Category	Therapeutic Area	Page
Neteera 	www.neteera.com	<ul style="list-style-type: none">• Nursing Applications• Remote Monitoring• Telemedicine Solutions	<ul style="list-style-type: none">• Rehabilitation	17
PATTERNNOX 	www.patternnox.com	<ul style="list-style-type: none">• Artificial Intelligence• Imaging• Remote Monitoring	<ul style="list-style-type: none">• Dermatology and Aesthetics• Oncology• Wound Management	18
Pulsenmore Home Ultrasound 	www.pulsenmore.com	<ul style="list-style-type: none">• Imaging• Remote Monitoring• Telemedicine solutions	<ul style="list-style-type: none">• Obstetrics• Prenatal• Women's Health	19
WizeCare Technologies 	www.wizecare.com	<ul style="list-style-type: none">• Mobile Healthcare• Remote Monitoring• Telemedicine Solutions	<ul style="list-style-type: none">• Geriatrics• Orthopedic• Rehabilitation	20



Index by Category

Artificial Intelligence	Personal Health Assistant
deliverz.ai	Movement Wellness
Kemtai	
Movement Wellness	Point of Care Diagnostics
PATTERNOX	Nanose Medical
Clinical Document Management	Proactive wellness / Lifestyle / Patient Engagement
iMDsoft	Kemtai
	Movement Wellness
Diagnostic	
Nanose Medical	Remote Monitoring
	PATTERNOX
Electronic Medical Records	Neteera Technologies
iMDsoft	Pulsenmore Home Ultrasound
	WizeCare Technologies
Hospital Operational Efficiency	
deliverz.ai	Robotics
	deliverz.ai
Imaging	
PATTERNOX	Telemedicine Solutions
Medical Equipment	Neteera Technologies
EFA Technologies	EFA Technologies
	Kemtai
Mobile Healthcare	Pulsenmore Home Ultrasound
EFA Technologies	WizeCare Technologies
WizeCare Technologies	
Remote Monitoring	
Pulsenmore Home Ultrasound	
WizeCare Technologies	
Nursing Applications	
iMDsoft	
Neteera Technologies	



Contents by Therapeutic Areas

Hematology
EFA Technologies
Obstetrics
Pulsenmore Home Ultrasound
Dermatology and Aesthetics
PATTERNOX
General Health
deliverz.ai
Movement Wellness
Geriatrics
WizeCare Technologies
Emergency Medicine
iMDsoft
General Surgery
iMDsoft
Intensive Care
iMDsoft
Metabolic Diseases
Movement Wellness
Nanose Medical
Metabolic Diseases
Movement Wellness
Neurology and Degenerative Disease
Movement Wellness

Obesity
Kemtai
Oncology
deliverz.ai
Nanose Medical
PATTERNOX
Orthopedic
Kemtai
WizeCare Technologies
Primary Care
deliverz.ai
Nanose Medical
Prenatal
Pulsenmore Home Ultrasound
Rehabilitation
WizeCare Technologies
Kemtai
Neteera Technologies
Wound Management
PATTERNOX
Women's Health
Pulsenmore Home Ultrasound

deliverz.ai

www.deliverz.ai

deliverz.ai 

Categories

- Artificial Intelligence
- Hospital Operational Efficiency
- Robotics

Therapeutic Areas

- General Health
- Oncology
- Primary Care



AI-powered logistics orchestration platform unifying autonomous robots, transporters, staff, and operational workflows

AI-powered orchestration platform unifying autonomous robots, transporters, staff and workflows into a single intelligent logistics automation system, optimizing the delivery of medications, samples, supplies, patient transfers, and other use cases across healthcare facilities. We provide a comprehensive solution-as-a-service offering as a service, including autonomous robots, AI orchestration platform, analytics, and end-user applications. The platform supports any robot type, operates indoors and outdoors, and integrates seamlessly with hospital systems and infrastructure. The result is immediate improvements in operational efficiency, cost reduction, increased throughput, optimized patient flow, reduced length of stay, and improved patient & staff satisfaction.

EFA Technologies

www.efa-technologies.com



Categories

- Medical Equipment
- Mobile Healthcare
- Telemedicine Solutions

Therapeutic Areas

- Hematology



First of its kind, portable, fully automated CBC Analyzer

EFA Technologies is an innovative Israeli MedTech company transforming point-of-care diagnostics by bringing laboratory-grade blood testing directly to patients. EFA develops, manufactures, and distributes RevDx™, a fully automated and portable, CBC scanner that delivers rapid, accurate hematology results from a single drop of blood. By enabling decentralized testing without traditional lab infrastructure, EFA improves access to diagnostics and accelerates clinical decision-making worldwide.

Categories

- Clinical Document Management
- Electronic Medical Records
- Nursing Applications

Therapeutic Areas

- Emergency Medicine
- General Surgery
- Intensive Care



MetaVision: a purpose-built clinical information system for critical care and anaesthesia excellence

iMDsoft, a Harris Computer subsidiary, is dedicated to transforming critical care through innovation, expertise, and a deep understanding of complex clinical environments. Its flagship solution, MetaVision, is a purpose-built clinical information system for intensive care and perioperative settings, deployed in over 400 hospitals worldwide. Designed for high data intensity and unique ICU and anesthesia workflows, MetaVision enables advanced clinical decision-making and medication management. It supports the full continuum of care, from admission to discharge, through a unified patient record, with seamless integration to hospital systems and hundreds of medical devices.

Kemtai Ltd.

www.kemtai.com



Categories

- Artificial Intelligence
- Proactive wellness / Lifestyle / Patient Engagement
- Telemedicine Solutions

Therapeutic Areas

- Obesity
- Orthopedic
- Rehabilitation



Digital Physical Therapy Platform

Kemtai is an advanced computer vision AI digital exercise platform that uses advanced computer vision to provide real-time, corrective feedback for rehabilitation and physical therapy. Running on any device without sensors or wearables, it analyzes 113 body points with scientifically proven accuracy. Kemtai enables providers like Virtua Health and BBraun to scale home-based care through AI-guided protocols and detailed performance analytics. Whether via API or a white-label app, Kemtai improves patient outcomes and operational efficiency by extending the therapist's reach directly into the patient's home.



Movement Wellness

www.movement-group.com

movement 
wellness & preventive medicine

Categories

- Artificial Intelligence
- Personal Health Assistant
- Proactive wellness / Lifestyle / Patient Engagement

Therapeutic Areas

- General Health
- Metabolic Diseases
- Neurology and Degenerative Disease



Developing evidence-based wellness and behavior change applications for HMOs, organizations, and corporations

Movement is Israel's largest wellness group, partnering with the world's third-largest healthcare organization, as well as leading HMOs and government bodies, to develop technologies that promote wellness. At our core, we are tech-driven, creating evidence-based behavior change applications that seamlessly help people build healthier everyday habits. Through our innovative products and services, we deliver scalable digital solutions that drive real user engagement and transform well-being at a massive scale.

Nanose Medical

www.nanosemed.com



Categories

- Diagnostic
- Disease Management
- Point of Care Diagnostics

Therapeutic Areas

- Metabolic Diseases
- Oncology
- Primary Care



Point-of-care breath diagnosis powered by nanosensors and AI

We develop a rapid, non-invasive point-of-care breath analysis platform combining proprietary nanosensors with AI. Our technology creates a novel biological feature space from breath biomarkers, enabling disease detection beyond conventional methods. We are focused on early lung cancer detection and liver fibrosis staging, and are currently in the clinical phase across 8 medical centers. Based on thousands of breath samples collected, our results demonstrate performance superior to current non-invasive tests, including high sensitivity for early-stage lung cancer (Stages I-II). Backed by EIC grants and Google, Nanose Medical is advancing a scalable diagnostic platform designed to enable faster, more accessible clinical decision-making.

Neteera

www.neteera.com



Categories

- Nursing Applications
- Remote Monitoring
- Telemedicine Solutions

Therapeutic Areas

- Rehabilitation



Contactless Monitoring for 24/7 Care

Contactless Patient Monitoring Keeps Watch 24/7, Because You Can't — Patients need uninterrupted care from caregivers who can't be everywhere. Our continuous vitals and activity monitoring help ease the struggle between resources and care.

PATTERNNOX

www.patternnox.com



Categories

- Artificial Intelligence
- Imaging
- Remote Monitoring

Therapeutic Areas

- Dermatology and Aesthetics
- Oncology
- Wound Management



Innovative imaging system to detect skin and lesion deformities worldwide. For cancer, cosmetics, and more. For Clinics and Home Users

The Problem

Currently, Skin cancer detection that relies on Color change, which happens at a late stage, leads to a high mortality rate.

Our Solution

An innovative handheld scanner to detect deformities under the skin at an EARLY stage.

The need: About 1.9 billion people with skin deformities.

The Market: Dermatologists, General practitioners (GPs), Beauticians, and Home Users worldwide.



Pulsenmore Home Ultrasound

www.pulsenmore.com



Categories

- Imaging
- Remote Monitoring
- Telemedicine Solutions

Therapeutic Areas

- Obstetrics
- Prenatal
- Women's Health



Pulsenmore is a prenatal home ultrasound solution improving access, care quality, and efficiency

Pulsenmore is redefining prenatal care with a clinically validated home ultrasound and telehealth platform that enables true hybrid care. Its unique solution allows expectant mothers to perform ultrasound scans at home using a smartphone-connected device, with results securely reviewed by clinicians in real time or asynchronously. This reduces unnecessary clinic visits while maintaining safety and professional review. With over 150,000 scans completed and proven outcomes - including reduced visit times and improved patient satisfaction - Pulsenmore stands out by enhancing access, continuity of care, and emotional reassurance. It complements traditional imaging, supports providers in delivering efficient, patient-centric care.



WizeCare Technologies

www.wizecare.com

wizecare

Categories

- Mobile Healthcare
- Remote Monitoring
- Telemedicine Solutions

Therapeutic Areas

- Geriatrics
- Orthopedic
- Rehabilitation



AI-powered platform improving patient outcomes and healthcare operational efficiency

AI-powered platform improving patient outcomes and healthcare operational efficiency. Our solution leverages advanced analytics and machine learning to deliver real-time, personalized insights that support clinical decision-making and streamline care pathways. It integrates seamlessly into existing workflows, enabling rapid adoption without adding burden on clinicians. By combining predictive modeling with actionable recommendations, we help providers reduce costs, improve quality metrics, and enhance patient experiences at scale.

hlth.2026

healthcare innovation event

This publication is for informational purposes only. While every effort has been made to ensure that the presented information is correct, The Israel Export Institute assumes no responsibility for damages, financial or otherwise, caused by the information herein.

© May 2026 The Israel Export Institute
Production: IEI Media and Communication Division
Design: Nurit Shelach, Adi Bloom
www.export.gov.il